

GLOBAL

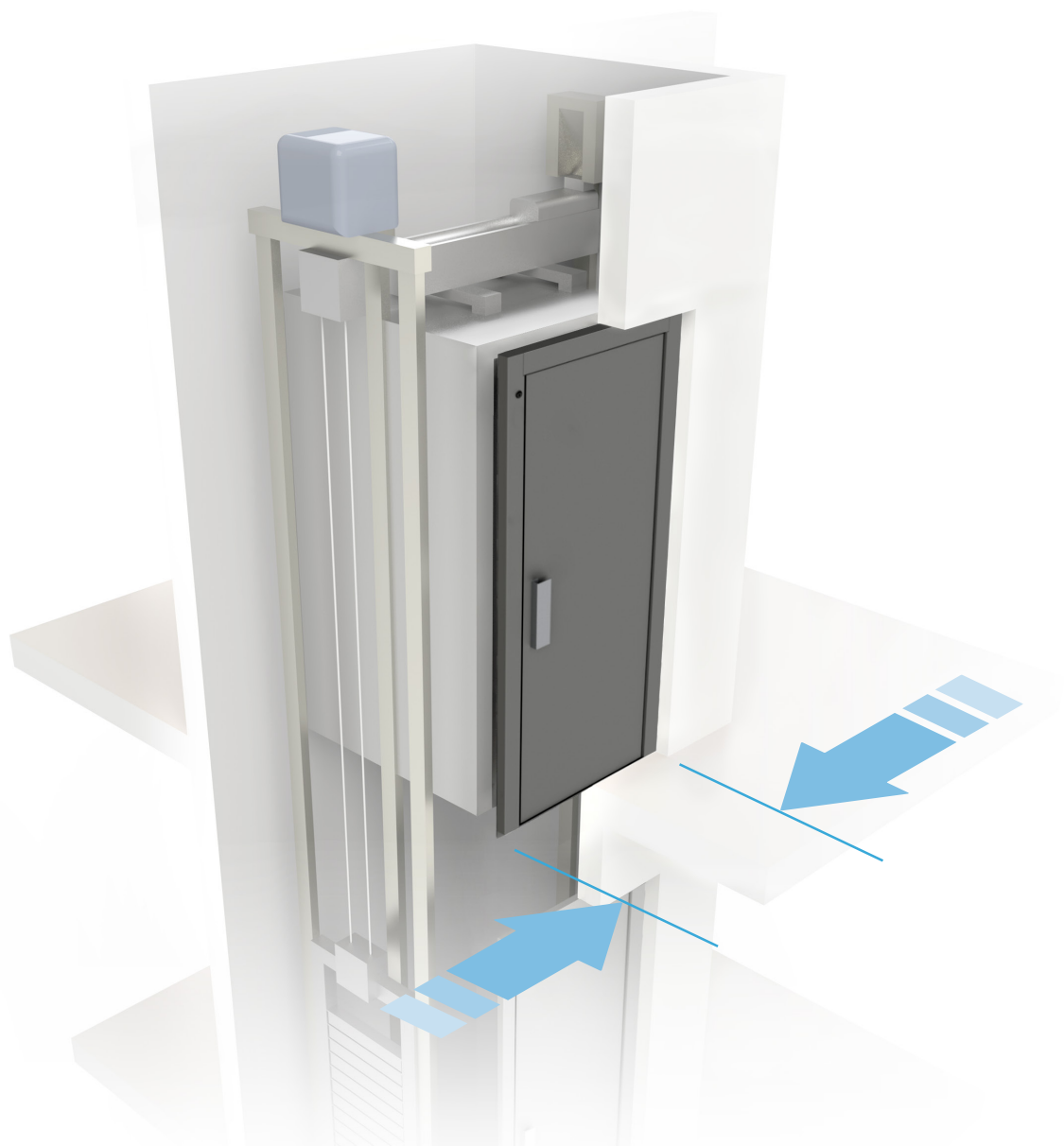
Semiautomatic hinged landing door



EXISTING INSTALLATION
MODERNIZATIONS AND REPLACEMENT



RESIDENTIAL
LIFTS



Door configuration






LIFT APPLICATION

Door cycles per year:	Up to 350.000
Traffic peak of the door:	Up to 240 cycles per hour.
Traffic lift speed:	Up to 2,5 m/s.

APPLICATION RANGE

Opening	Clear opening - PL (mm)	Clear height - HL (mm)
T1	500 - 1.000	1.800 - 2.100

PANELS

Opening	Steel panels			Glass panels	
	Sheet metal	Vision	Round vision	Big vision	Aluminium glass
					
T1	F.R.E120	F.R.E120 ⁽²⁾	x	x	x

F.R.: Fire rated according to EN 81-58.
⁽²⁾Ask at technological innovation department for more information.

FRAMES DEFINITION

Frame depth (mm)	Jamb J1 (mm)	Header (mm)	Jamb J2 (mm)	Remarks	Frame type				Options			
					STD	MSS MV	MSS MH	Con-coated	Lateral covers	Without extra-stroke	MRL	Without lateral punching
50	75	100	75	-	✓	x	x	x	x	x	x	✓
	100	100	100	-	✓	x	x	x	x	x	x	✓
	120	100	120	-	✓	x	x	x	x	x	x	✓

MSS MV: Frame without sill supplement with visible sill support.
MSS MH: Frame without sill supplement with hidden sill support.
Without extra-stroke: Closing jamb without labyrinth.
MRL: Jamb ready for lift control cabinet in machine roomless installations.

STANDARDS

Opening	EN 81-1/2 Safety rules	EN 81-21 Existing buildings	EN 81-41 Impaired mobility	EN 81-71 Vandal resistance lifts		EN 81-72 Firefighters lifts	EN 81-20/50 Safety rules
				Cat. I	Cat. II		
T1	✓	✓	✓	x	x	x	✓

Available⁽¹⁾. Not available.  Ask the commercial department.

⁽¹⁾Some option combinations may not be possible.

Door configuration

PROTECTION

Opening	IP20	IPX3	IP54		IP65	EEEx
	Protection against a solid foreign body of 12,5 mm or more in diameter.	Protected against sprays of water up to 60 degrees from the vertical.	Protection against dust and protected against water splashed from all directions.		Sealed against dust and protected against jets of water from all directions.	Explosion proof, Group II (surface industries) and Category 2 (explosive atmosphere between 10 and 1.000 hrs/yr).
			Magnetic contact	Mechanical contact		
T1	✓	✗	✗	✗	✗	✗

HANDLES

Clamp handle



COMPATIBILITY

Cam detail								
Case	Automatic horizontal sliding car door 40/10 SLIM, 40/10 VF, 40/10 PM, 50/11 VF					Automatic folding car door Standard, Flat, Flat ECC, Flat ECC+		
Coupling	Sliding cams					Folding cams		
Type of cam	Lateral retractable	Frontal retractable	Inverted retractable	Flexible fixed	Fixed	Lateral retractable	Frontal retractable	Frontal reduced
Toe guard type	Standard	Standard	Standard	Standard	Standard	Standard	Standard	Standard
Toe guard height	270	270	270	270	270	270	270	270
Thickness	1	1	1	1	1	1	1	1
Range	All	All	All	All	All	All	All	All

All dimensions in mm.

COMPATIBLE LOCKS

Manufactured by	Series	Model	Description	Actings	Additional options
Fermator	Fermator	Evolution	Mechanical acting	Frontal	-
				Lateral	-
Gervall	Ref. 03.096	-	Electrical	-	Auxiliary contact
	Ref. 03.103	-	Electrical	-	Auxiliary contact

Available⁽¹⁾ Not available. Ask the commercial department.

⁽¹⁾Some option combinations may not be possible.

Technical features



Sheet metal



Vision panel

GENERAL FEATURES

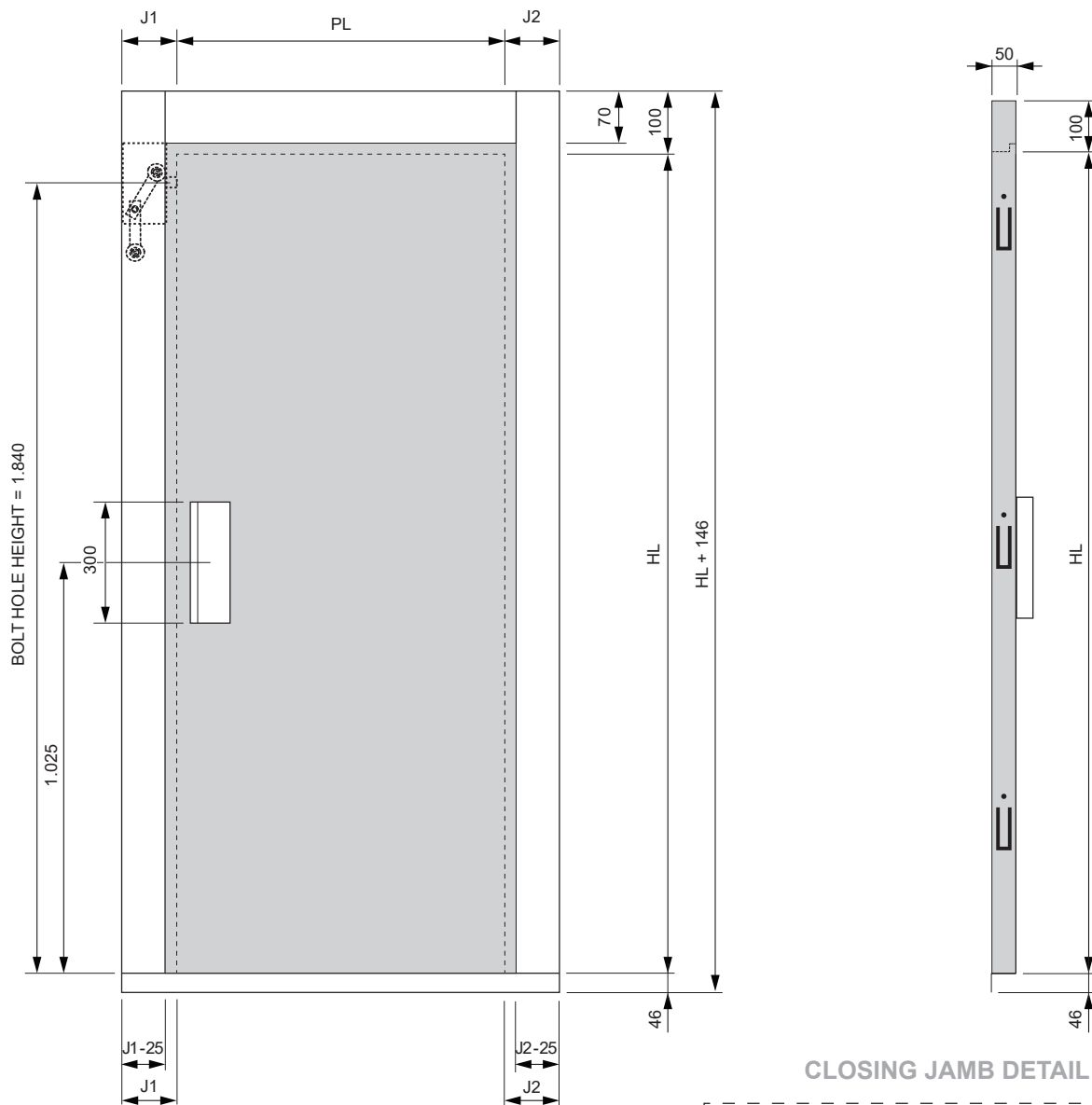
Total weight	Reference: T1 PL 800 mm HL 2.000 mm with vision panels - 62 kg.
Safety closing system	Strip with door damper.

INSTALLATION

Pre-adjusted and tested to simplify the installation.

Technical drawing Semiautomatic hinged landing door

Sheet metal panel



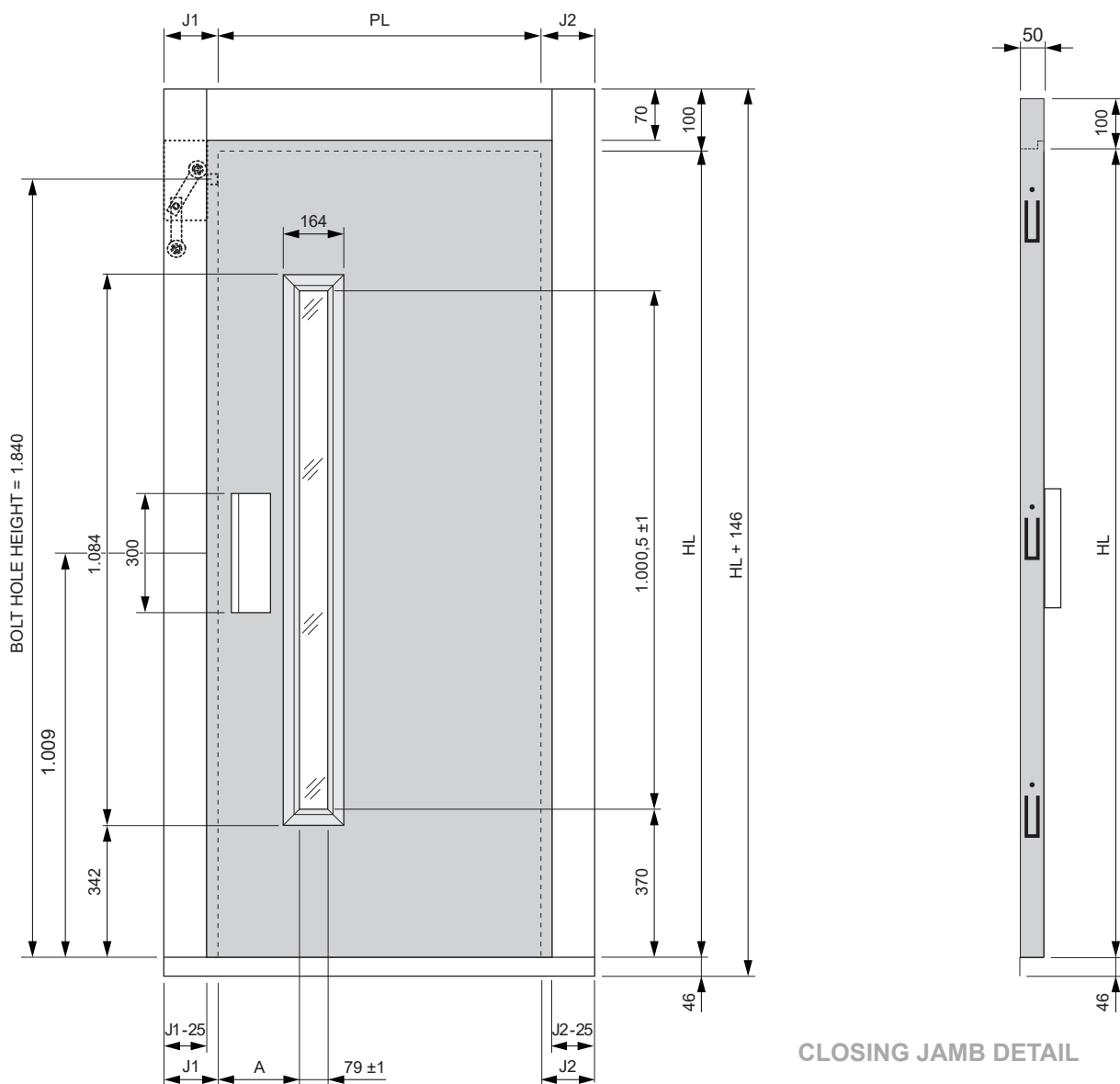
PL	500	550	600	650	700	750	800	850	900	950	1.000
WEIGHT (kg)	47	50	52	55	57	60	62	65	67	70	72

Notes:

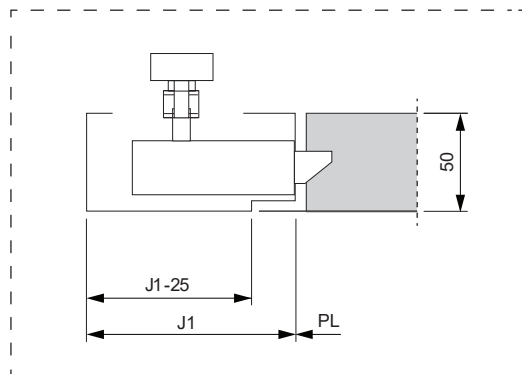
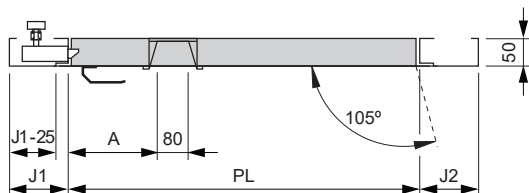
- If not otherwise indicated all dimensions in mm.

Technical drawing Semiautomatic hinged landing door

Vision panel



CLOSING JAMB DETAIL



PL	500	550	600	650	700	750	800	850	900	950	1.000
A	150				183		208		233		258
WEIGHT (kg)	47	50	52	55	57	60	62	65	67	70	72

Notes:

- If not otherwise indicated all dimensions in mm.

fermator
AUTOMATIC DOORS FOR LIFTS



Sales contacts

General

info@fermator.com

Manufacturing companies

Brazil: info.br@fermator.com • China: info.cn@fermator.com • France: info.hp@fermator.com • India: info.in@fermator.com
Italy: info.it@fermator.com • Poland: info.pl@fermator.com • Spain: info.es@fermator.com

Trading companies

France: info.ff@fermator.com • Germany: info.de@fermator.com • Middle East: info.tr@fermator.com
Nordic countries: info.se@fermator.com • United Kingdom: info.uk@fermator.com

www.fermator.com